

SURVEYOR'S CERTIFICATE

I Arnold R. Kegel, a Registered Professional Engineer, being first duly sworn, dispose and say that I have correctly subdivided, surveyed and marked with legal monuments the lands represented on this plat of CROOKED RIVER RANCH N^o 11, a subdivision of Jefferson County, Oregon, located in portions of Sections 4 and 5, Township 13 South, Range 12 East, Willamette Meridian.

Arnold R. Kegel



Engineer Certificate N^o 5792

James S. Hull

Notary Public in and for the State of Washington
Residing at EVERETT
My Commission expires JULY 29, 1978



MERIDIAN

The basis of Bearing for this survey is the South Oregon Lambert Coordinate System utilizing U.S.C. & G.S. Triangulation Stations "Juni", "Geneva", "Big Falls" and "Peninsula N^o 2" for reference.

MONUMENTATION

Subdivision corners and exterior angle points are marked with concrete monuments or lead plugs as described. Road centerline control at intersections and points of curvature are marked with 5/8 inch rod buried 12 inches below subgrade as shown. Lot corners are marked with 1/2 inch iron rod extending 3 inches above ground surface and witnessed with 1/2 x 4 x 48 inch painted cedar stakes.

INITIAL POINT

I commenced this survey at the one-quarter section corner common to Sections 4 and 9, Township 13 South, Range 12 East, Willamette Meridian, which is marked with a brass cap set in a standard concrete monument, as described in the plat of Crooked River Ranch N^o 6, as recorded in Volume 3, Book of Plats, Pages 29 thru 31, records of Jefferson County Oregon. I then traveled North 88°49'14" West along the subdivision line common to said Sections 4 and 9, a distance of 1321.06 feet to the southwest corner of the Southeast one-quarter of the Southwest one-quarter of said Section 4, (said corner bears North 89°55'01" West, 19,315 feet from U.S.C. & G.S. Triangulation Station "Juni"). At this point I placed a concrete monument 24 inches high, with a 6 x 6 inch base tapering to a 4 x 4 inch top, flush with the ground affixed with a brass cap inscribed "Initial Point - CRR N^o 11, CRR N^o 10, 1976, ARK 5792", for the initial point of this survey. The coordinates of this point are North 1021,336.37 and East 1,789,815.38, South Oregon Lambert Grid.

SUBDIVISION RETRACEMENT SURVEY

This retracement survey encompasses Sections 4 and 5, Township 13 South, Range 12 East, Willamette Meridian.

I began this Retracement of the corner common to Sections 4, 5, 8 and 9, which is a standard concrete monument as described in the survey of Crooked River Ranch N^o 6 as recorded in Volume 3 of Plats, Pages 29 through 31, Jefferson County Oregon.

I then traveled North 89°30'44" West, along the line common to Sections 5 and 8 for 2660.13 feet to a stone marked "1/4" in a mound of rock with two bearing trees, as described by the Surveyor General, as one-quarter corner common to Sections 5 and 8. I removed this stone and set a standard concrete monument.

I then traveled North 89°29'48" West along the line common to Sections 5 and 8 for 2017.21 feet to the top of the east rim of the Deschutes River where I set a 1/2 inch iron rod into a crevice in basalt rock as a witness point to said section line.

I then continued along said section line for 607.65 feet to a marked stone in a rock mound with one bearing tree as described by the Surveyor General as the corner common to Sections 5, 6, 7 and 8. I removed this stone and set a 1/2 inch iron rod.

I then traveled North 1°43'50" East along the line common to Sections 5 and 6 for 2497.99 feet to the one-quarter corner common to Sections 5 and 6, witnessed by one bearing tree as described by the Surveyor General, from which I reestablished the corner position and set a 1/2 inch iron rod in sandstone.

I then traveled North 0°31'38" East along the line common to Sections 5 and 6 for 2533.40 feet to a large mound of small stone lying in a very old east and west fence line marking the corner common to Sections 5 and 6, Township 13 South, Range 12 East, Willamette Meridian, and Sections 31 and 32, Township 12 South, Range 12 East, Willamette Meridian. In this mound I set a standard concrete monument and scribed two new bearing trees. (This corner bears South 88°21'32" East, 5318.24 feet from the standard northwest corner of Township 13 South, Range 12 East, Willamette Meridian, at which point I found a 7 x 10 x 15 inch stone marked with six notches on four edges lying at the edge of a large mound of rock as described by the Surveyor General. In the center of this mound I set a brass cap into a large stone, fourteen inches below the ground surface. I repiled the rock over the new corner and scribed three new bearing trees. I also searched for the one-quarter corner common to Sections 6 and 31 but could find no evidence of neither the corner or its accessories.)

I then traveled South 89°35'39" East along a very old fence marking the line common to Townships 12 and 13 South, Range 12 East a distance of 438.05 feet where I set a standard concrete monument marked "WP" as Witness Point on top of the rim on the west side of the Deschutes River.

I then continued South 89°35'39" East along said township line for 2216.94 feet to the one quarter corner common to sections 5 and 32 established by single

proportionate measurement having searched and found no evidence of the original stone or its accessories. (This position is located on a steep talus slope and being unsuitable to locate a stable corner) I therefore continued South 89°35'39" East for 273.54 feet to the top of the east rim of the Deschutes River where I set a 12 inch concrete monument with a 4 x 4 inch base cemented into the bedrock affixed with a lead plug marked "WP".

I then continued South 89°35'39" East along said Township line marked by a very old fence line in a settler's stonerow for 2381.45 feet where I searched for the corner common to Sections 4, 5, 32 and 33. Finding no evidence of this corner I set a standard concrete monument and scribed two bearing trees at a single proportion distance between the toe of the east rim of the Deschutes River and the top of the west rim of the Crooked River. (2355.10 feet GLO (2364.38 feet meas.) and 1376.10 feet GLO (1375.10 feet meas.) respectively.)

I then traveled South 89°45'03" East along said township line for 2637.14 feet to the one-quarter corner common to Sections 4 and 33 established by single proportionate measurement having searched and found no evidence of the original stone or its accessories. (Since this position is impractical for establishment of a monument I set a brass cap in a large rock at the West one-sixteenth corner of Section 4 at the top of the west rim of the Crooked River on the township line as a witness to said one-quarter section corner.)

I then continued South 89°43'05" East along said township line for 2574.44 feet to a stone marked "CC" in a rock mound witnessed by one original bearing tree as described by the Surveyor General as the closing corner to Sections 4 and 3, Township 13 South, Range 12 East. I removed this stone and set a standard concrete monument fourteen inches below the ground surface, repiled the rock mound and scribed a new bearing tree. (The standard corner marking the corner common to Sections 33 and 34, Township 12 South, Range 12 East, is 95 links east of this point, I searched for and found no evidence of this corner or its accessories.)

I then traveled South 0°27'22" West, along the line common to Sections 4 and 3 for 2454.98 feet to the one-quarter corner common to Sections 4 and 3 where I re-established the position from two original bearing trees as described by the Surveyor General. As this location falls in a plowed potato field, I set a standard concrete monument sixteen inches below the ground surface and placed a yellow BLM tag on the southeast bearing tree.

I then continued South 0°24'50" West along said section line for 2175.17 feet to a standard concrete monument marked "WC" as the witness corner to the corner common to Sections 3, 4, 9 and 10 whose position falls in the Crooked River and is not accessible. This corner and its accessories is described in the Correction Plat to Crooked River Ranch N^o 3, Volume 3 of Plats, Page 4A, records of the Jefferson County Clerk.

I then continued South 0°24'50" West, along the line common to Sections 4 and 3 for 474.05 feet to the corner common to Sections 3, 4, 9 and 10 as first described above.

I then traveled North 89°15'50" West, along the line common to Sections 4 and 9, for 2653.98 feet to a standard concrete monument marking the one-quarter corner common to said sections as first described above.

I then returned to the corner common to Sections 4, 5, 32 and 33 as previously established. From which I traveled South for 2539.68 feet (38.48 chains) and searched for the one-quarter corner common to Sections 4 and 5. Finding no evidence of the corner at this location I continued South for 2500.39 feet to the corner common to Sections 4, 5, 8 and 9 as previously established.

I then traveled North 0°38'22" East, along the line common to Sections 4 and 5, for 2628.05 feet and set a standard concrete monument for the one-quarter corner common to said Sections 4 and 5 in an old north and south fence line. This distance north of the section corner corresponds to the distance as noted by Fred A. Rice in the 1913 survey of the Davenport Road described in Vol. 5 on page 115, Commissioners Journal of Crook County, Oregon, dated Nov. 6, 1913. This one-quarter position lies 682 feet (10.34 chains) west of the present roadbed which also corresponds with said road survey.

I then continued North 2°14'41" East along the line common to said Sections 4 and 5, for 2412.20 feet to the corner common to Sections 4, 5, 32 and 33 as previously established.

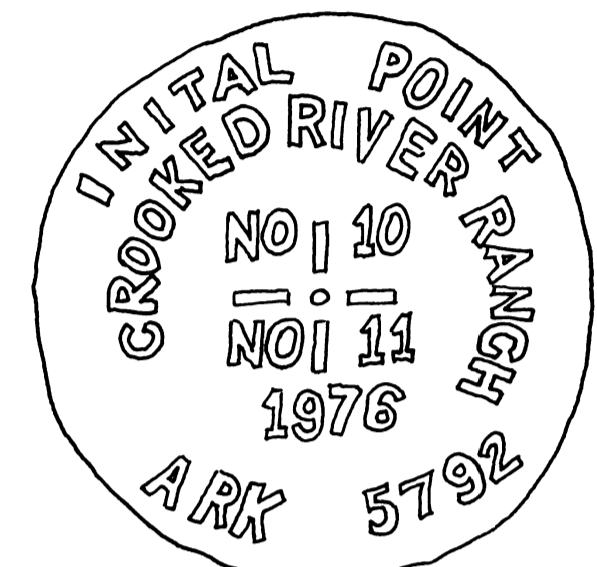
LEGAL DESCRIPTION OF PLAT BOUNDARY

Beginning at the southeast corner of the SW 1/4 of the SW 1/4 of Section 4, Township 13 South, Range 12 East, Willamette Meridian, said corner being the Initial Point of this survey; thence North 88°49'14" West along the south line of said subdivision 1321.06 feet to the section corner common to Sections 4, 5, 8 and 9, Township 13 South, Range 12 East, W.M.; thence North 89°30'44" West along the subdivision line common to Section 5 and 8 a distance of 2660.13 feet to the one-quarter corner common to said Sections 5 and 8; thence North 89°29'48" West along the subdivision line common to Sections 5 and 8 a distance of 1312.43 feet to the southwest corner of the SE 1/4 of the SW 1/4 of Section 5, thence North 1°35'49" East along the west line of said subdivision a distance of 1265.33 feet to the northwest corner of said subdivision; thence North 89°47'11" East along the north line of said subdivision a distance of 1309.93 feet to the southwest corner of the NW 1/4 of the SE 1/4 of said section; thence North 1°28'00" East along the west line of said subdivision a distance of 1281.67 feet to the center of said Section 5; thence North 89°04'00" East along the north line of said NW 1/4 of the SE 1/4 a distance of 1312.05 feet to the southwest corner of the E 1/2 of the NE 1/4 of Section 5; thence North 1°51'04" East along the west line of said subdivision a distance of 2442.40 feet to the northwest corner of said subdivision; thence South 89°35'39" East along the north line of said subdivision a distance of 1327.50 feet to the section corner common to Sections 4 and 5, Township 13 South, Range 12 East, W.M. and to sections 32 and 33, Township 12 South, Range 12 East, W.M.; thence South 89°45'03" East along the line common to said Sections 4 and 33 a distance of 1318.57 feet to the northeast corner of Govt. lot 4; thence South 1°47'35" West along the east line of said Govt. lot 4 a distance of 1168.12 feet to the southeast corner thereof; thence North 89°19'18" West along the south line of said subdivision a distance of 1327.47 feet to the southwest corner of said Govt. lot 4; thence South 2°14'41" West along the line common to Sections 4 and 5 a distance of 1253.74 feet to the one-quarter corner common to Sections 4 and 5; thence South 0°38'22" West along the line common to Sections 4 and 5 a distance of 1314.02 feet to the northwest corner of the SW 1/4 of Section 4; thence South 89°02'50" East along the north line of said subdivision a distance of 1899.26 feet; thence departing said north line South 28°34'10" East a distance of 1522.08 feet to the one-quarter corner common to Sections 4 and 9; thence North 88°49'14" West along the line common to Sections 4 and 9 a distance of 1321.06 feet to the Initial Point of this survey, Containing an area of 373.23 acres.

CROOKED RIVER RANCH NO. 11

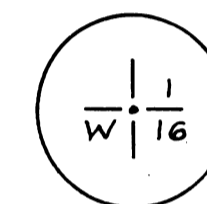
IN SECTIONS 4 & 5, T13S, R12EWM
JEFFERSON COUNTY, OREGON

SHEET 1 OF 7

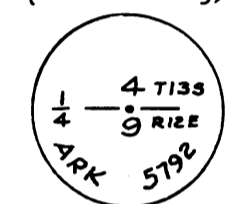


INITIAL POINT

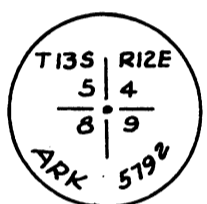
Full Size
(From Rubbing)



1/4 Corner



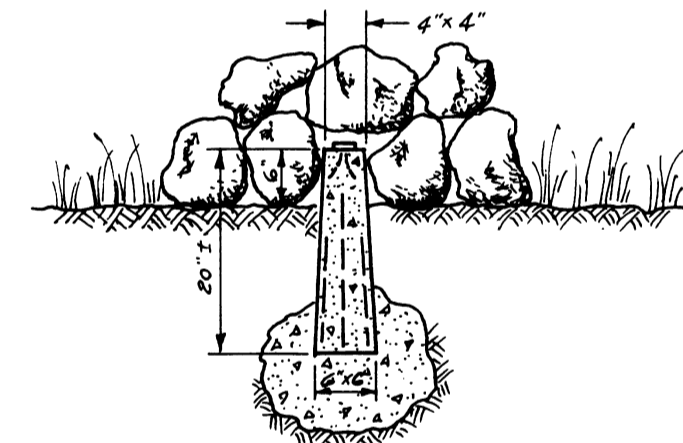
1/4 Corner



Section Corner

BRASS CAP SCRIBE DETAIL

Not to Scale



STANDARD CONCRETE MONUMENT

Not to Scale

MONUMENT DETAILS

RECORDING CERTIFICATE #120843

Filed for record at the request of the County Court this 3 day of November, 1976, at 8 minutes past 2:00 P.M., and recorded in Volume 4 of Plats, Page 20-26 Through, Records of the Clerk of Jefferson County Oregon.

Elaine L. Henderson

Clerk of Jefferson County

DEDICATION

KNOW ALL MEN BY THESE PRESENTS, THAT WE THE UNDERSIGNED, OWNERS IN FEE SIMPLE, CONTRACT PURCHASERS AND OTHER HOLDERS OF INTEREST IN THE LAND BEING PLATTED, HEREBY DECLARE THIS PLAT AND DEDICATE TO THE USE OF THE PUBLIC FOREVER, ALL ROADS, STREETS, AVENUES, AND PLACES, AND THE USE THEREOF FOR ANY AND ALL HIGHWAY PURPOSES; ALSO THE RIGHT TO MAKE NECESSARY SLOPES FOR CUTS AND FILLS UPON THE LOTS AND THE RIGHT OF PERPETUAL DRAINAGE FROM THE ROADWAY INTO THEIR NATURAL COURSES ACROSS THE LOTS SHOWN THEREON.

IN WITNESS WHEREOF, WE HAVE HEREUNTO SET OUR HANDS AND SEALS.

William R. MacPherson
WILLIAM R. MACPHERSON, AUTHORIZED PARTNER
CROOKED RIVER RANCH, A LIMITED PARTNERSHIP

Sydney Gross
SYDNEY GROSS

Sarah Gross
SARAH GROSS

T. Graham Bell
T. GRAHAM BELL

June L. Bell By: T. Graham Bell
JUNE L. BELL, BY: T. GRAHAM BELL
Executor of the Estate of June L. Bell, Deceased

BY: K.J. Walter
K.J. WALTER

FIRST NATIONAL BANK OF OREGON, TRUSTEE

BY: Helen Bird
HELEN BIRD

William R. MacPherson
WILLIAM R. MACPHERSON, PRESIDENT OF CROOKED
RIVER RANCH CLUB AND MAINTENANCE ASSOCIATION

ACKNOWLEDGEMENTS

STATE OF WASHINGTON S.S.
COUNTY OF KING

THIS IS TO CERTIFY THAT ON THIS 5th DAY OF APRIL, 1976, BEFORE ME, THE UNDERSIGNED, A NOTARY PUBLIC, PERSONALLY APPEARED WILLIAM R. MACPHERSON, AUTHORIZED PARTNER OF CROOKED RIVER RANCH, A LIMITED PARTNERSHIP, TO ME KNOWN TO BE THE INDIVIDUAL WHO EXECUTED THE WITHIN DEDICATION AND ACKNOWLEDGED TO ME THAT HE SIGNED AND SEALED THE SAME AS HIS VOLUNTARY ACT AND DEED FOR THE USES AND PURPOSES THEREIN MENTIONED.

WITNESS MY HAND AND OFFICIAL SEAL THE DAY AND YEAR FIRST ABOVE WRITTEN.

Lustanna Scott Eiden
NOTARY PUBLIC IN AND FOR THE STATE OF
Washington, RESIDING AT Everett
MY COMMISSION EXPIRES July 20, 1977

STATE OF ARIZONA S.S.
COUNTY OF SANTA CRUZ

THIS IS TO CERTIFY THAT ON THIS 19th DAY OF OCTOBER, 1976, BEFORE ME, THE UNDERSIGNED, A NOTARY PUBLIC, PERSONALLY APPEARED T. GRAHAM BELL, FOR HIMSELF AND AS EXECUTOR OF THE ESTATE OF JUNE L. BELL, DECEASED, THE INDIVIDUAL WHO EXECUTED THE WITHIN DEDICATION AND ACKNOWLEDGED TO ME THAT THEY SIGNED AND SEALED THE SAME AS THEIR VOLUNTARY ACT AND DEED FOR THE USES AND PURPOSES THEREIN MENTIONED.

WITNESS MY HAND AND OFFICIAL SEAL THE DAY AND YEAR FIRST ABOVE WRITTEN.

Lewis Norman Carter
NOTARY PUBLIC IN AND FOR THE STATE OF
ARIZONA, RESIDING AT Nogales
MY COMMISSION EXPIRES January 29, 1980

STATE OF CALIFORNIA S.S.
COUNTY OF LOS ANGELES

THIS IS TO CERTIFY THAT ON THIS 17 DAY OF March, 1976, BEFORE ME, THE UNDERSIGNED, A NOTARY PUBLIC, PERSONALLY APPEARED SYDNEY GROSS AND SARAH GROSS, HIS WIFE, TO ME KNOWN TO BE THE INDIVIDUALS WHO EXECUTED THE WITHIN DEDICATION AND ACKNOWLEDGED TO ME THAT THEY SIGNED AND SEALED THE SAME AS THEIR VOLUNTARY ACT AND DEED FOR THE USES AND PURPOSES THEREIN MENTIONED.

WITNESS MY HAND AND OFFICIAL SEAL THE DAY AND YEAR FIRST ABOVE WRITTEN.

Leo A. Shanfield
NOTARY PUBLIC IN AND FOR THE STATE OF
California, RESIDING AT Los Angeles
MY COMMISSION EXPIRES 3-11-79

STATE OF OREGON S.S.
COUNTY OF MULTNOMAH

THIS IS TO CERTIFY THAT ON THIS 31 DAY OF MARCH, 1976, BEFORE ME, THE UNDERSIGNED, A NOTARY PUBLIC, PERSONALLY APPEARED K. J. WALTER AND HELEN BIRD, TO ME KNOWN TO BE THE ASSISTANT VICE PRESIDENT AND ASSISTANT CASHIER, RESPECTIVELY, OF FIRST NATIONAL BANK OF OREGON, ONE OF THE CORPORATIONS THAT EXECUTED THE WITHIN DEDICATION AND ACKNOWLEDGED THE SAME TO BE THE FREE AND VOLUNTARY ACT AND DEED OF SAID CORPORATION, FOR THE USES AND PURPOSES THEREIN MENTIONED, AND ON OATH STATED THAT THEY ARE AUTHORIZED TO EXECUTE SAID DEDICATION AND THAT THE SEAL AFFIXED, IF ANY, IS THE CORPORATE SEAL OF SAID CORPORATION.

WITNESS MY HAND AND OFFICIAL SEAL THE DAY AND YEAR FIRST ABOVE WRITTEN.

Joseph C. Chandler
NOTARY PUBLIC IN AND FOR THE STATE OF
OREGON, RESIDING AT Portland
MY COMMISSION EXPIRES 10-31-76

STATE OF WASHINGTON S.S.
COUNTY OF KING

THIS IS TO CERTIFY THAT ON THIS 5th DAY OF APRIL, 1976, BEFORE ME, THE UNDERSIGNED, A NOTARY PUBLIC, PERSONALLY APPEARED WILLIAM R. MACPHERSON, TO ME KNOWN TO BE THE PRESIDENT OF CROOKED RIVER RANCH CLUB AND MAINTENANCE ASSOCIATION, ONE OF THE CORPORATIONS THAT EXECUTED THE WITHIN DEDICATION AND ACKNOWLEDGED THE SAME TO BE THE FREE AND VOLUNTARY ACT AND DEED OF SAID CORPORATION, FOR THE USES AND PURPOSES THEREIN MENTIONED, AND ON OATH STATED THAT HE IS AUTHORIZED TO EXECUTE SAID DEDICATION AND THAT THE SEAL AFFIXED, IF ANY, IS THE CORPORATE SEAL OF SAID CORPORATION.

WITNESS MY HAND AND OFFICIAL SEAL THE DAY AND YEAR FIRST ABOVE WRITTEN.

Lustanna Scott Eiden
NOTARY PUBLIC IN AND FOR THE STATE OF
Washington, RESIDING AT Everett
MY COMMISSION EXPIRES July 20, 1977

APPROVALS JEFFERSON COUNTY OFFICIALS

James W. Hawthorne
SURVEYOR

EXAMINED AND APPROVED
THIS 3 DAY OF June, 1976

Ted W. Freeman
PLANNING COMMISSION CHAIRMAN

EXAMINED AND APPROVED
THIS 3 DAY OF Nov., 1976

Bryan C. Christian
PLANNING DIRECTOR

EXAMINED AND APPROVED
THIS 3 DAY OF Nov., 1976

COUNTY COURT

Herschel Reed
JUDGE

EXAMINED AND APPROVED
THIS 3 DAY OF Nov., 1976

Louis Olson
COMMISSIONER

EXAMINED AND APPROVED
THIS 3 DAY OF Nov., 1976

Gordon Galbraith
COMMISSIONER

EXAMINED AND APPROVED
THIS 3 DAY OF Nov., 1976

ASSESSOR'S CERTIFICATE

I HEREBY CERTIFY THAT ALL AD VALOREM TAXES AND SPECIAL ASSESSMENTS, FEES, AND OTHER CHARGES REQUIRED BY LAW TO BE PLACED ON THE 1976 TO 1977 TAX ROLL, WHICH BECAME A LIEN ON THIS SUBDIVISION OR WILL BECOME A LIEN DURING THE CALENDAR YEAR, BUT NOT YET CERTIFIED TO THE TAX COLLECTOR FOR COLLECTION, HAVE BEEN PAID TO ME, AND HAVE EXAMINED AND APPROVED THE SUBDIVISION SHOWN ON THIS PLAT.

COUNTY ASSESSOR: Carl Zerbe
DATE: 11-3-76

CROOKED RIVER RANCH NO. 11

SHEET 2 OF 7

RESTRICTIONS & RESERVATIONS GENERAL

ALL PURCHASERS OF LOTS WITHIN THIS PLAT ARE SUBJECT TO CERTAIN RULES, REGULATIONS, RESTRICTIONS AND RESERVATIONS OF A NON PROFIT CORPORATION ENTITLED "CROOKED RIVER RANCH CLUB AND MAINTENANCE ASSOCIATION", HEREINAFTER KNOWN AS THE "ASSOCIATION". SAID ASSOCIATION IS COMPRISED OF ALL OWNERS OF PARCELS OF CROOKED RIVER RANCH, PHASE I AND II, OWNERS OF LOTS WITHIN THE PLATS OF CROOKED RIVER RANCH NOS. 3, 4, 5, 6, 7, 8 AND 9, AND OWNERS OF LOTS WITHIN THIS PLAT AND FUTURE PLATS AS WELL AS SPECIAL MEMBERSHIPS BEING OFFERED. SPECIFIC ASSOCIATION DOCUMENTS ARE RECORDED IN VOLUME 50, PAGES 390 AND 391, AND VOLUME 56, PAGES 742 AND 743, RECORDS OF THE CLERK OF JEFFERSON COUNTY, OREGON.

UTILITY EASEMENT

AN EASEMENT IS HEREBY RESERVED FOR AND GRANTED TO THE ASSOCIATION OVER, UNDER, THROUGH AND ACROSS A STRIP OF LAND 5 FEET IN WIDTH, PARALLEL WITH AND ADJOINING THE REAR AND SIDELINES OF ALL LOTS IN THIS PLAT, IN WHICH TO INSTALL, LAY, CONSTRUCT, OPERATE AND MAINTAIN OVERHEAD AND UNDERGROUND CONDUIT, CABLES AND WIRES WITH NECESSARY FACILITIES AND OTHER EQUIPMENT FOR THE PURPOSE OF SERVING THIS PLAT WITH ELECTRIC AND TELEPHONE SERVICE. ALSO, FOR PURPOSES OF DRAINAGE AND SUCH ADDITIONAL UTILITIES AS MAY BE CONSTRUCTED IN THE FUTURE, TOGETHER WITH THE RIGHT TO ENTER UPON THE LOTS AT ALL TIMES FOR THE PURPOSES HEREIN STATED.

TRAIL EASEMENT

A NON-EXCLUSIVE EASEMENT IS HEREBY GRANTED TO THE ASSOCIATION FOR THE BENEFIT OF OWNERS OF ALL LOTS OF THIS OR ANY ADDITIONAL PLATS OF CROOKED RIVER RANCH, THEIR INVITEES AND LICENSEES, AND OTHER ASSOCIATION MEMBERS, FOR THE PURPOSE OF INGRESS AND EGRESS OVER, ACROSS AND ALONG THE REAR AND SIDELINES OF THOSE LOTS SHOWN ON THE FACE OF THE PLAT AND IDENTIFIED THEREON AS "RIDING AND WALKING TRAILS." THIS EASEMENT SHALL BE FOR THE PURPOSE OF: (1) RIDING AND WALKING TRAILS. (2) UTILITIES. THE USE OF MOTORIZED VEHICLES IS EXPRESSLY PROHIBITED WITH THE EXCEPTION OF EMERGENCY EQUIPMENT OF PROTECTION, MEDICAL, OR FIREFIGHTING AGENCIES ON SUCH TERMS AND CONDITIONS AS MAY BE DEEMED ADVISABLE.

BUILDING RESTRICTIONS

ALL BUILDING PLANS FOR STRUCTURES TO BE BUILT IN THIS PLAT MUST BE SUBMITTED TO AND RECEIVE APPROVAL FROM THE ARCHITECTURAL CONTROL COMMITTEE OF THE ASSOCIATION. PARTICULAR EMPHASIS IS PLACED UPON THE TYPE OF STRUCTURE, SETBACKS, COMPATIBILITY AND SPECIAL CONSIDERATION FOR METHOD OF SEWAGE DISPOSAL. THE PLANS SHALL FURTHER CONFORM TO THE ELEMENTS IN THE BUILDING CODE ORDINANCE AS ADOPTED BY JEFFERSON COUNTY AND SHALL BE SUBMITTED TO THE JEFFERSON COUNTY BUILDING INSPECTOR, AND SHALL RECEIVE APPROVAL AND HAVE A PERMIT ISSUED PRIOR TO THE START OF ANY CONSTRUCTION.

SANITATION RESTRICTIONS

FIELD TESTS HAVE BEEN CONDUCTED AND THE RESULTS REVIEWED BY THE JEFFERSON COUNTY HEALTH DEPARTMENT AND THE OREGON STATE DEPARTMENT OF ENVIRONMENTAL QUALITY RESULTING IN AN ACCEPTABLE SEWAGE DISPOSAL SITE BEING SITUATED ON EACH AND EVERY LOT IN THIS SUBDIVISION. THE LOCATION OF THE SATISFACTORY TESTS HAVE BEEN PLACED UPON A MAP WHICH IS ON FILE WITH THE JEFFERSON COUNTY HEALTH DEPARTMENT AND RECORDED IN VOLUME 12, BOOK OF MISCELLANEOUS RECORDS, PAGES 439-441, RECORDS OF THE CLERK OF JEFFERSON COUNTY, OREGON.

IT SHALL BE THE RESPONSIBILITY OF THE LOT OWNER TO FORMULATE A TOTAL BUILDING PLAN WHICH GIVES PROPER CONSIDERATION TO THE ELEMENT OF SEWAGE DISPOSAL. SAID PLAN SHALL BE SUBMITTED TO THE JEFFERSON COUNTY HEALTH DEPARTMENT AND SHALL RECEIVE APPROVAL AND HAVE A PERMIT ISSUED PRIOR TO THE START OF ANY CONSTRUCTION.

COMMUNITY PROPERTY

AREAS DESIGNATED AS "COMMUNITY" IN THE PLAT ARE PROPERTIES TO BE OWNED, DEVELOPED AND MAINTAINED BY THE ASSOCIATION FOR THE BENEFIT OF OWNERS OF ALL LOTS IN THIS PLAT OR ANY ADDITIONAL PLAT OR SUBDIVISIONS OF CROOKED RIVER RANCH AND OTHER ASSOCIATION MEMBERS, AS SET FORTH IN THE INSTRUMENTS OF RECORD.

ROAD MAINTENANCE

THE OBLIGATION FOR THE COST OF REMOVAL OF SNOW AND THE MAINTAINING OF ROADS, STREETS, AVENUES AND PLACES WITHIN THIS PLAT SHALL BE THE RESPONSIBILITY OF THE ASSOCIATION, WHICH SHALL KEEP THE ROADS IN GOOD REPAIR AND SHALL RENDER THEM PASSABLE AT ALL TIMES. SAID MAINTENANCE SHALL BE CONDUCTED WITH FUNDS OF THE ASSOCIATION OBTAINED FROM ITS MEMBERS AND SHALL BE AT NO COST TO THE COUNTY.

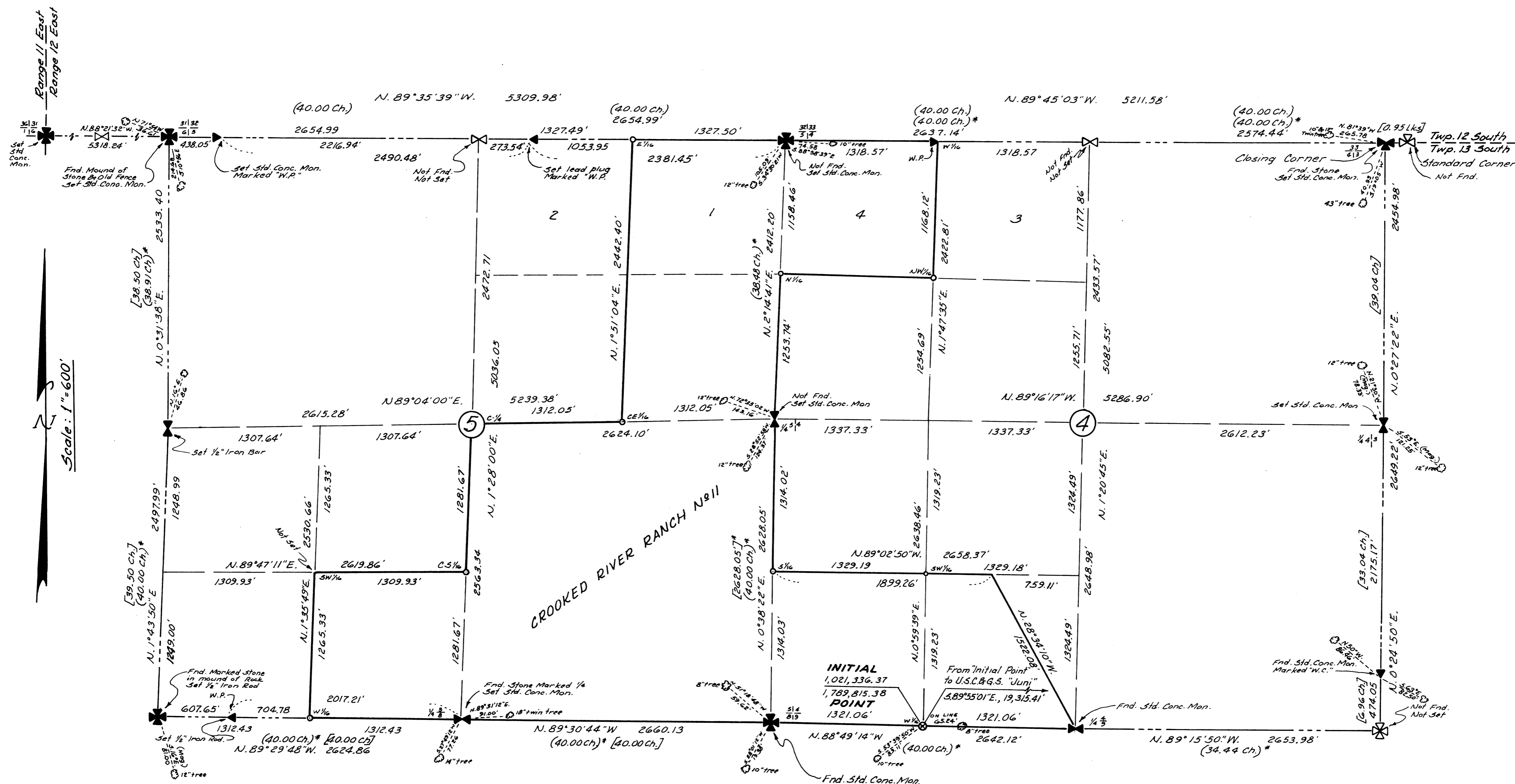
IN THE EVENT THAT ANY OF THE OWNERS OF ANY OF THE LOTS IN THIS PLAT OR ADDITIONAL PLATS OR SUBDIVISIONS SHALL PETITION THE COUNTY COURT TO INCLUDE ROADS IN THE COUNTY ROAD SYSTEM, IT IS UNDERSTOOD THAT THE ASSOCIATION SHALL FULLY DEVELOP THE ROAD SYSTEM TO ROAD STANDARDS OF JEFFERSON COUNTY AND THAT ALL CONSTRUCTION SHALL BE FREE OF LIENS, COSTS AND OTHER LIABILITIES AND OBLIGATIONS. ACCEPTANCE IS AT EXCLUSIVE OPINION OF THE COUNTY COURT.

SHERIFF'S CERTIFICATE

I HEREBY CERTIFY THAT ALL TAXES HAVE BEEN PAID IN ACCORDANCE WITH THE PROVISIONS OF ORS 92-095.

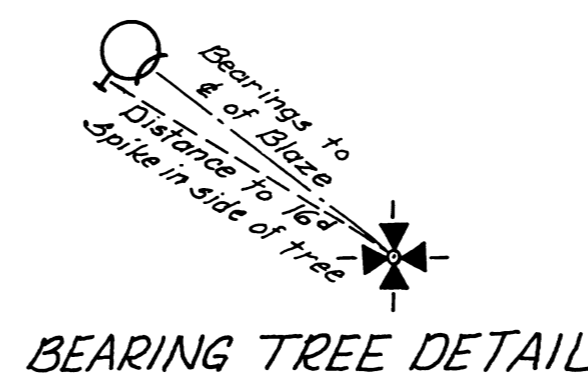
COUNTY SHERIFF: Lambert P. Perkins
DATE: 11-03-76

CROOKED RIVER RANCH NO. 11 SHEET 3 OF 7

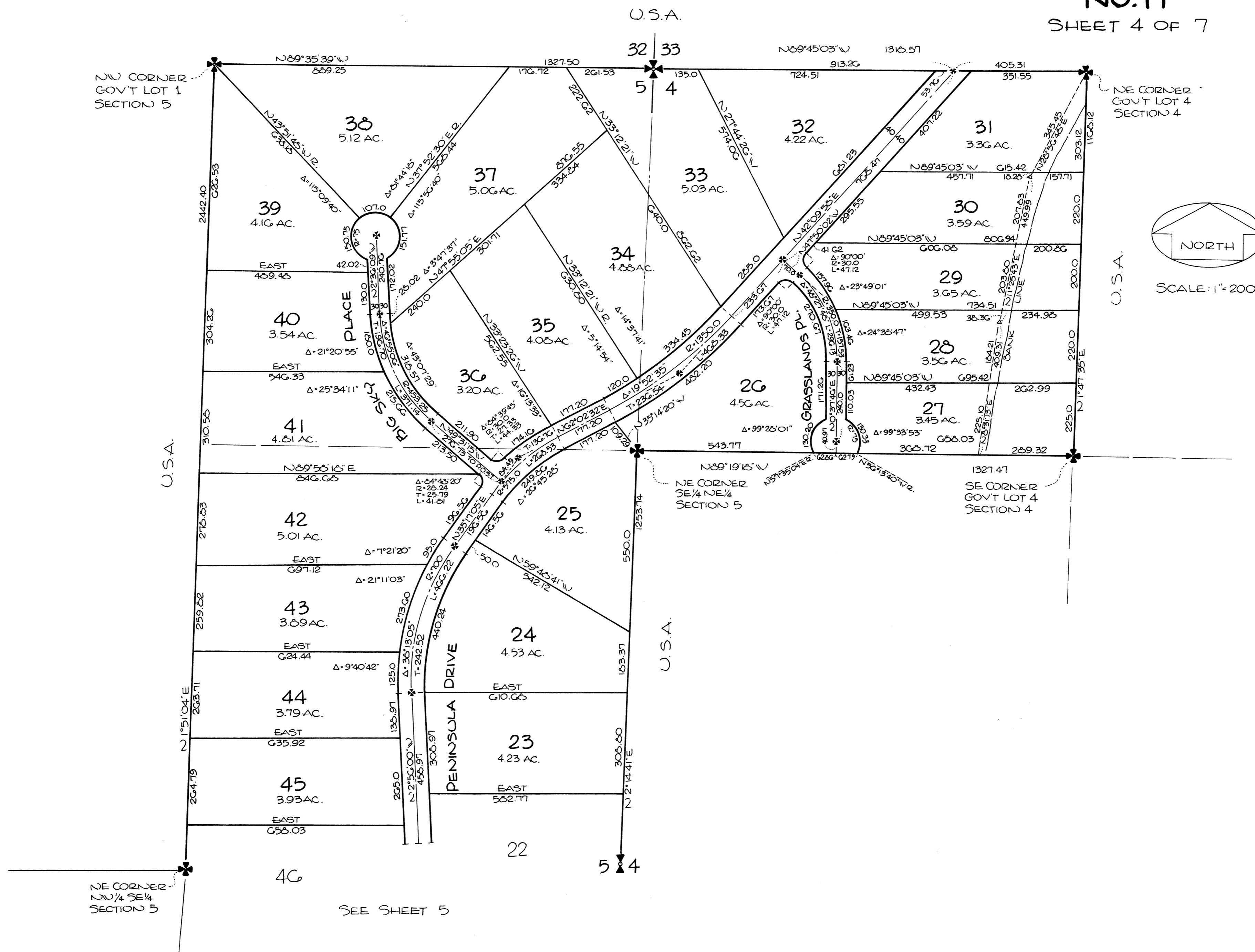


LEGEND

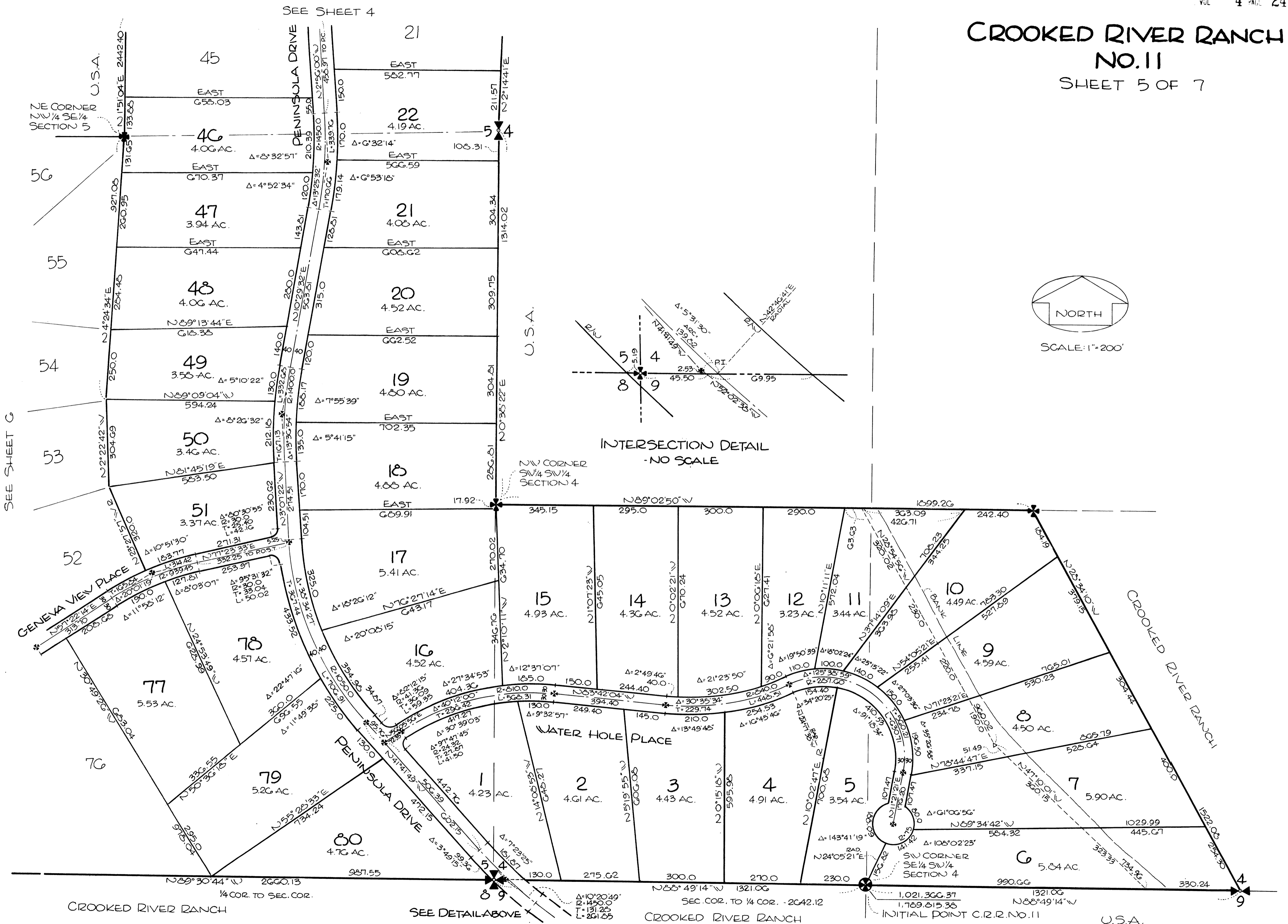
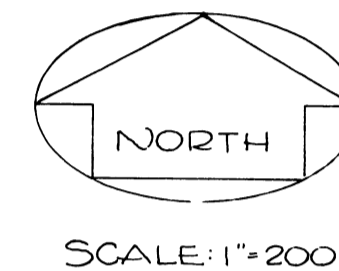
- () G.L.O. - Walker & Perkins - 1871 - Book 109.
- (*) G.L.O. - Sam Lackland - 1883 - Book 295.
- [] G.L.O. - Edward Sharp - 1904 - Book 472.
- []* Crook County - Davenport Road - 1913.

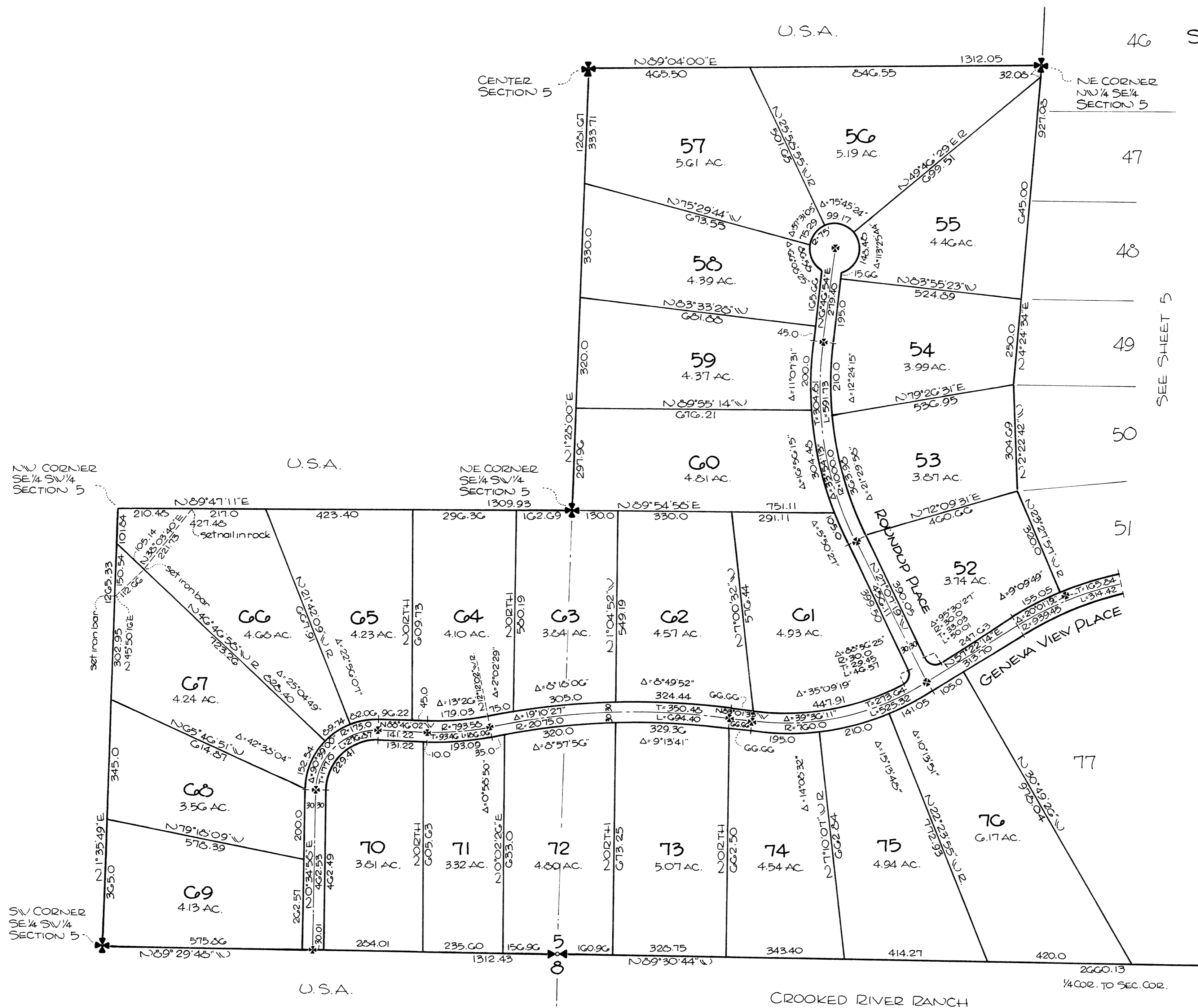
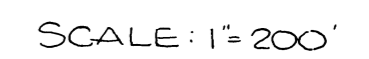


CROOKED RIVER RANCH NO. 11 SHEET 4 OF 7



CROOKED RIVER RANCH
NO. 11
SHEET 5 OF 7





CROOKED RIVER RANCH NO. 11 EASEMENT ROAD SHEET 7 OF 7

